

COVID-19 Capacity Management Package



Dimensional Insight® COVID-19 Capacity Management Package

It's critical for hospitals and health systems to understand their COVID-19 patient populations and how they are impacting hospital operations. Dimensional Insight is offering its customers a COVID-19 Capacity Management package to give them visibility and a better understanding of their impacts from COVID-19.

The new package provides the tools necessary for a comprehensive approach to assessing, monitoring, and actively managing the COVID-19 patient population. The dashboards are geared to providing insights into the number of COVID-19 patients, both suspected and diagnosed regarding counts, locations, severity of illness, disposition, and testing on an hourly basis.

What the support package includes

- Diver Platform®/Measure Factory® & Hospital Operations™
- An orders dataset that provides order information specific to COVID-19 related orders
- Customer has a workflow process that identifies those patients that are considered suspicious for COVID-19 and that the pertinent data elements can be extracted from their EHR
- The customer can provide a reference table identifying the rooms and units that have been designated as COVID-19 units/rooms to monitor COVID-19 room capacity and occupancy rates
- The customer will provide the table name(s) and mnemonic(s) or other designations for COVID-19 testing and test results
- The customer will provide the mnemonic or other designation for ventilator orders

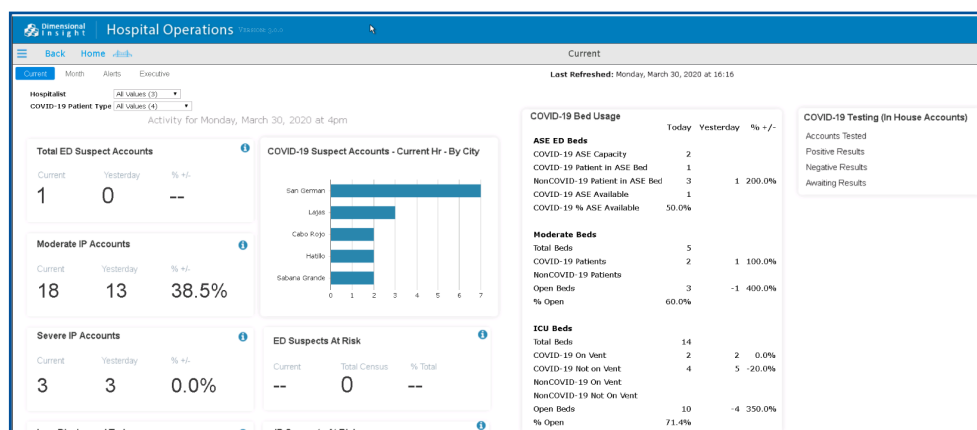
What the support package includes

- 48 measures with embedded metadata documentation
- 5 dashboard pages
- Measure Dictionary supplement
- Menu tile icon for integrating package into Hospital Operations dashboards
- Measures can be included in either conventional or self-service dashboards
- Licensing for the solution is complimentary; Dimensional Insight consulting can be purchased at a per-day rate

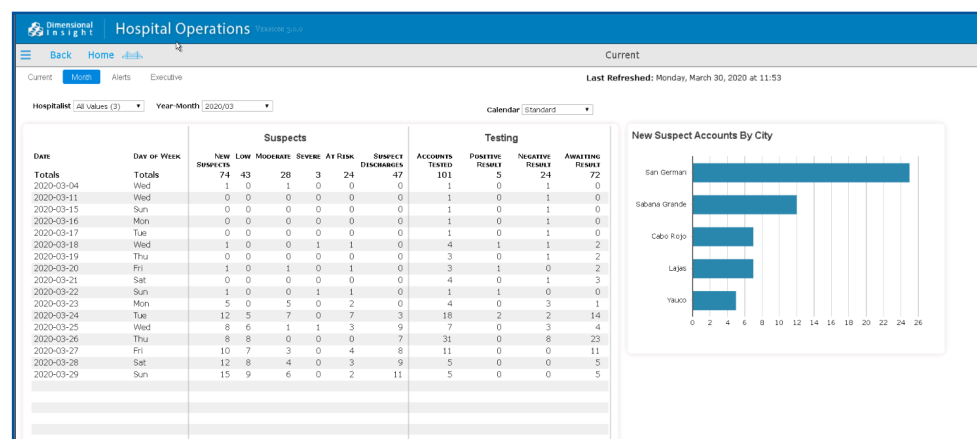
Measures included

- | | |
|---|---|
| • COVID-19 ASE Available | • COVID-19 % Moderate Occupancy |
| • COVID-19 % ASE Available | • COVID-19 Moderate Available |
| • COVID-19 Patient in ASE Bed | • Moderate COVID-19 Patient in Severe Bed |
| • COVID-19 Order Not Isolated | • Non-COVID-19 Non-Vent Patient in Severe Bed |
| • COVID-19 Tested Admissions | • COVID-19 Moderate Capacity |
| • COVID-19 Total Capacity | • COVID-19 Patient in Moderate Bed |
| • COVID-19 At-Risk Admissions | • Non-COVID-19 Patient in ASE Bed |
| • COVID-19 ED At-Risk Suspect Accounts | • Non-COVID-19 Patient in Moderate Bed |
| • COVID-19 Hourly Discharges | • Non-COVID-19 Vent Patient in Severe Bed |
| • COVID-19 IP Suspect Accounts | • COVID-19 % Severe Available |
| • COVID-19 IP Suspects at Risk | • COVID-19 % Severe Occupancy |
| • COVID-19 Low Suspect Admissions | • COVID-19 Severe Available |
| • COVID-19 Low Suspect Departures Pct Diff | • Severe COVID-19 Patient in Severe Bed |
| • COVID-19 Low Suspect Departures Today | • COVID-19 Severe Capacity |
| • COVID-19 Low Suspect Departures Yesterday | • COVID-19 Suspect Accounts |
| • COVID-19 Moderate Suspect Admissions | • COVID-19 ED Suspect Accounts |
| • COVID-19 Negative Curr Census | • COVID-19 Moderate IP Suspect Accounts |
| • COVID-19 Negative Results | • COVID-19 Severe IP Suspect Accounts |
| • COVID-19 Await Results Curr Census | • COVID-19 Suspect Admissions |
| • COVID-19 Positive Results | • COVID-19 Suspect Not Isolated |
| • COVID-19 Severe Suspect Admissions | • COVID-19 Suspect Mortality |
| • COVID-19 Tested Accounts | • COVID-19 Awaiting Results |
| • COVID-19 Isolated Negative Result | • COVID-19 % Total Occupancy |
| • COVID-19 Isolated Not Ordered | • Total COVID-19 Suspect Discharges |
| • COVID-19 % Moderate Available | • COVID-19 ASE Capacity |

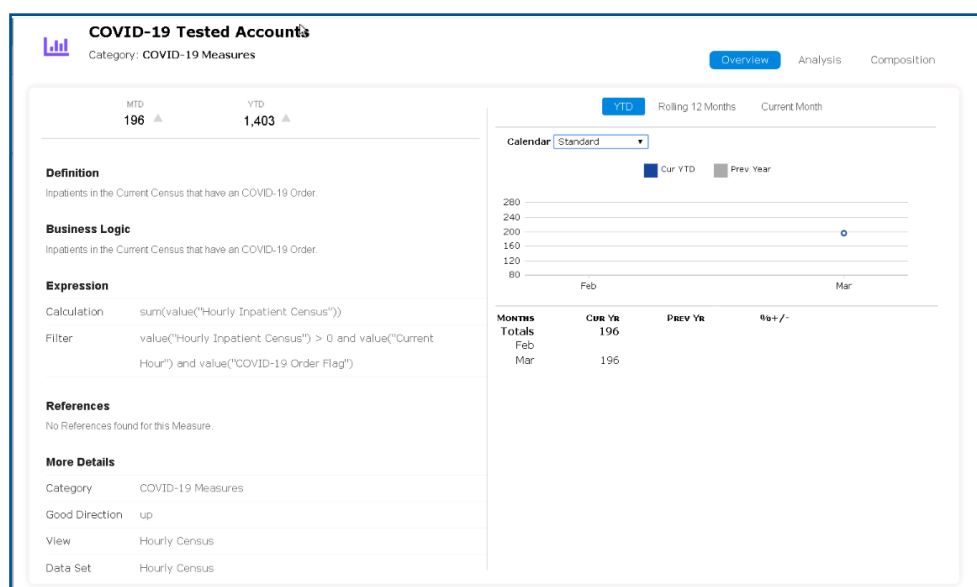
COVID-19 Current Page



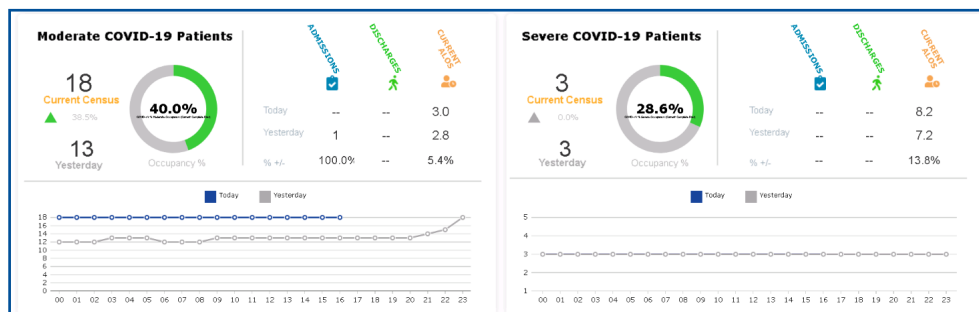
COVID-19 Monthly Page



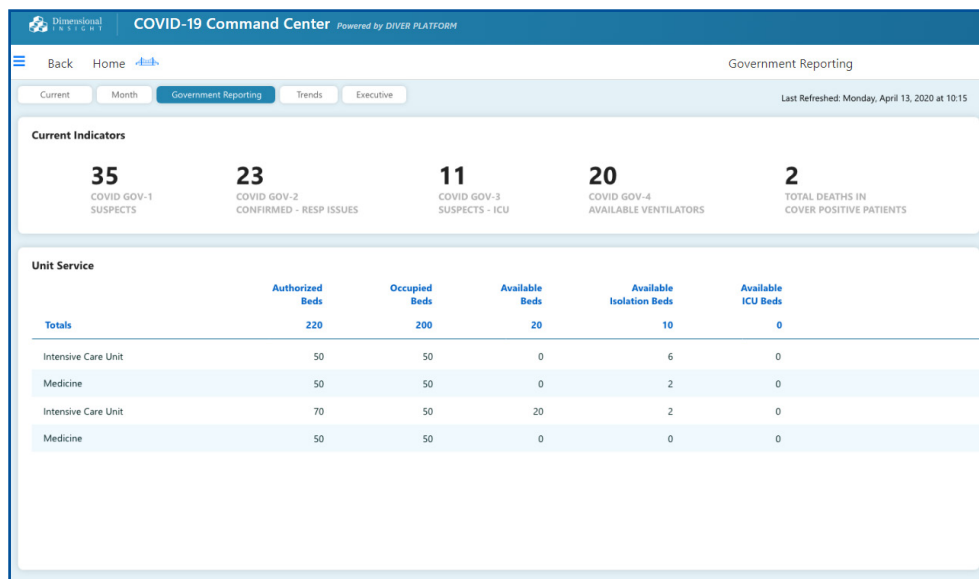
COVID-19 Overview Analysis Page



COVID-19 Executive Dashboard



COVID-19 Government Reporting Page



SEE OUR CUSTOMER RATINGS IN ANALYST RESEARCH



About Dimensional Insight

Dimensional Insight® is a leading provider of analytics, data management, and performance management solutions, offering a complete portfolio of capabilities ranging from data integration and modeling to sophisticated reporting, analytics, and dashboards. The company is an eight-time Best in KLAS winner in healthcare business intelligence and analytics from 2010 to 2021. Founded in 1989, Dimensional Insight has thousands of customer organizations worldwide. Dimensional Insight consistently ranks as a top performing analytics organization by customers and industry analysts in its core market segments including healthcare, manufacturing, and beverage alcohol. For more information, please visit <https://www.dimins.com/>.



60 Mall Road
Burlington, MA 01803
t: 781.229.9111
www.dimins.com

© 2022 Dimensional Insight Inc. All Rights Reserved. Dimensional Insight, Diver, Measure Factory, and Hospital Operations are either registered trademarks or trademarks of Dimensional Insight Inc. All other trademarks cited herein are the property of their respective owners.