

## COVID-19 Capacity Management Package



### Dimensional Insight® COVID-19 Capacity Management Package

It's critical for hospitals and health systems to understand their COVID-19 patient populations and how they are impacting hospital operations. Dimensional Insight is offering its customers a COVID-19 Capacity Management package to give them visibility and a better understanding of their impacts from COVID-19.

The new package provides the tools necessary for a comprehensive approach to assessing, monitoring, and actively managing the COVID-19 patient population. The dashboards are geared to providing insights into the number of COVID-19 patients, both suspected and diagnosed regarding counts, locations, severity of illness, disposition, and testing on an hourly basis.

#### What the support package includes

- Dimensional Insight Platform®/Measure Factory® & Hospital Operations™
- An orders dataset that provides order information specific to COVID-19 related orders
- Customer has a workflow process that identifies those patients that are considered suspicious for COVID-19 and that the pertinent data elements can be extracted from their EHR
- The customer can provide a reference table identifying the rooms and units that have been designated as COVID-19 units/rooms to monitor COVID-19 room capacity and occupancy rates
- The customer will provide the table name(s) and mnemonic(s) or other designations for COVID-19 testing and test results
- The customer will provide the mnemonic or other designation for ventilator orders

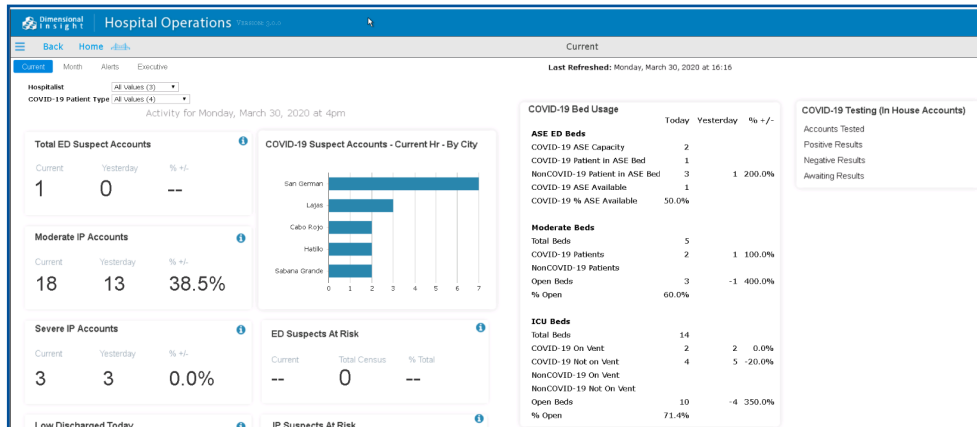
### What the support package includes

- 48 measures with embedded metadata documentation
- 5 dashboard pages
- Measure Dictionary supplement
- Menu tile icon for integrating package into Hospital Operations dashboards
- Measures can be included in either conventional or self-service dashboards
- Licensing for the solution is complimentary; Dimensional Insight consulting can be purchased at a per-day rate

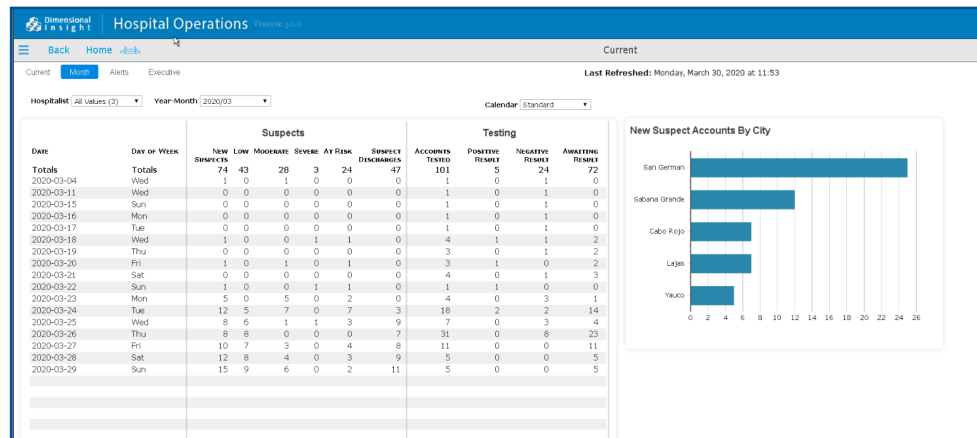
### Measures included

- COVID-19 ASE Available
- COVID-19 % ASE Available
- COVID-19 Patient in ASE Bed
- COVID-19 Order Not Isolated
- COVID-19 Tested Admissions
- COVID-19 Total Capacity
- COVID-19 At-Risk Admissions
- COVID-19 ED At-Risk Suspect Accounts
- COVID-19 Hourly Discharges
- COVID-19 IP Suspect Accounts
- COVID-19 IP Suspects at Risk
- COVID-19 Low Suspect Admissions
- COVID-19 Low Suspect Departures Pct Diff
- COVID-19 Low Suspect Departures Today
- COVID-19 Low Suspect Departures Yesterday
- COVID-19 Moderate Suspect Admissions
- COVID-19 Negative Curr Census
- COVID-19 Negative Results
- COVID-19 Await Results Curr Census
- COVID-19 Positive Results
- COVID-19 Severe Suspect Admissions
- COVID-19 Tested Accounts
- COVID-19 Isolated Negative Result
- COVID-19 Isolated Not Ordered
- COVID-19 % Moderate Available
- COVID-19 % Moderate Occupancy
- COVID-19 Moderate Available
- Moderate COVID-19 Patient in Severe Bed
- Non-COVID-19 Non-Vent Patient in Severe Bed
- COVID-19 Moderate Capacity
- COVID-19 Patient in Moderate Bed
- Non-COVID-19 Patient in ASE Bed
- Non-COVID-19 Patient in Moderate Bed
- Non-COVID-19 Vent Patient in Severe Bed
- COVID-19 % Severe Available
- COVID-19 % Severe Occupancy
- COVID-19 Severe Available
- Severe COVID-19 Patient in Severe Bed
- COVID-19 Severe Capacity
- COVID-19 Suspect Accounts
- COVID-19 ED Suspect Accounts
- COVID-19 Moderate IP Suspect Accounts
- COVID-19 Severe IP Suspect Accounts
- COVID-19 Suspect Admissions
- COVID-19 Suspect Not Isolated
- COVID-19 Suspect Mortality
- COVID-19 Awaiting Results
- COVID-19 % Total Occupancy
- Total COVID-19 Suspect Discharges
- COVID-19 ASE Capacity

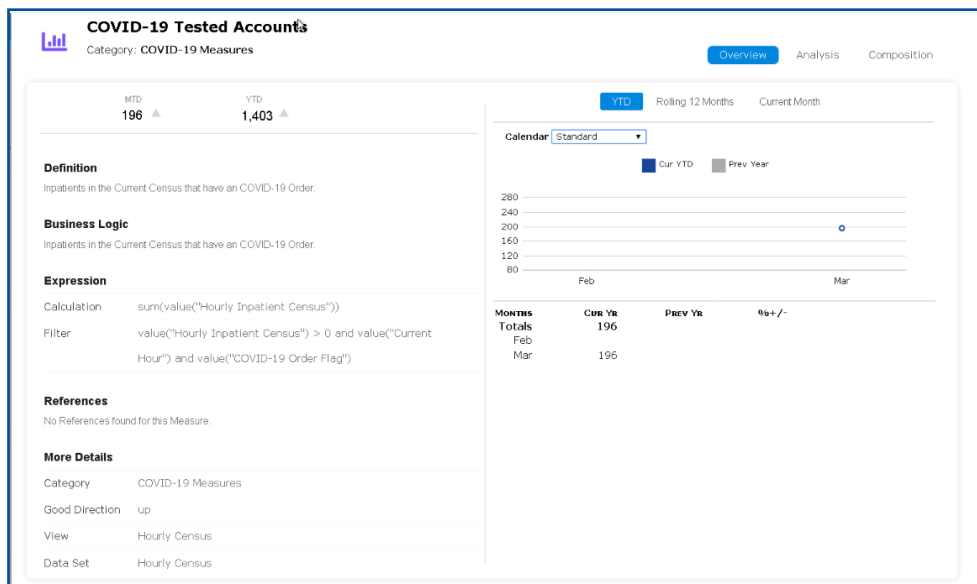
## COVID-19 Current Page



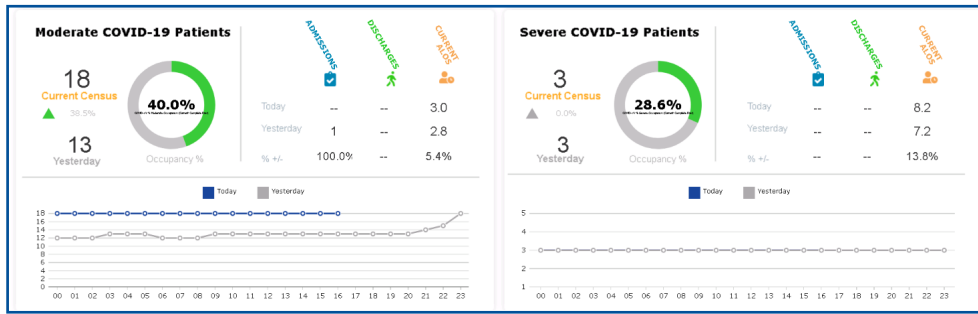
## COVID-19 Monthly Page



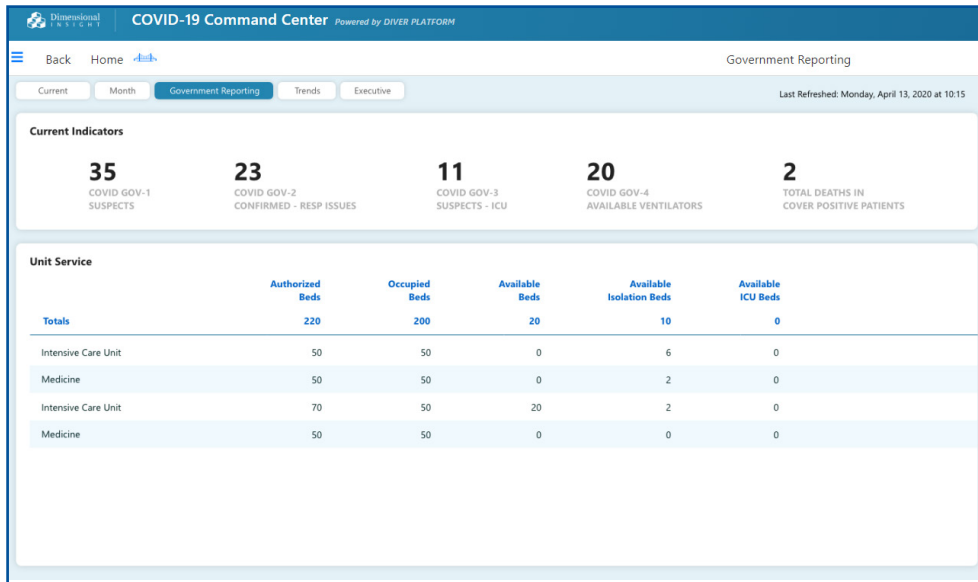
## COVID-19 Overview Analysis Page



## COVID-19 Executive Dashboard



## COVID-19 Government Reporting Page



## SEE OUR CUSTOMER RATINGS IN ANALYST RESEARCH



### About Dimensional Insight

Dimensional Insight® is a leading provider of analytics, data management, and performance management solutions, offering a complete portfolio of capabilities ranging from data integration and modeling to sophisticated reporting, analytics, and dashboards. The company is a ten-time Best in KLAS winner in healthcare business intelligence and analytics from 2009 to 2024. Founded in 1989, Dimensional Insight has thousands of customer organizations worldwide. Dimensional Insight consistently ranks as a top performing analytics organization by customers and industry analysts in its core market segments including healthcare, manufacturing, and beverage alcohol. For more information, please visit <https://www.dimins.com/>.



60 Mall Road  
 Burlington, MA 01803  
 t: 781.229.9111  
[www.dimins.com](http://www.dimins.com)

© 2022 Dimensional Insight Inc. All Rights Reserved. Dimensional Insight, Measure Factory, and Hospital Operations are either registered trademarks or trademarks of Dimensional Insight Inc. All other trademarks cited herein are the property of their respective owners.