

# END-TO-END ANALYTICS & BUSINESS INTELLIGENCE PLATFORM



[www.dimins.com](http://www.dimins.com)

Self-service Reporting, Visualizations & Dashboard Builder

# DIVEPORT®

*DivePort is a self-service administrative portal interface that delivers personalized, aggregated information of an organization's data to employees, customers, and partners through a login web browser. DivePort is fully integrated with Dimensional Insight Platform's data sources providing users with a single point of entry for access to a variety of dashboards, reports, charts, and analytical applications.*

### ACCOMODATES MANY TYPES OF USERS

DivePort accommodates the needs of a broad spectrum of users from analysts who want to dive into the depths of data for analysis, CSuite users who want to monitor KPIs, and report consumers who simply need to view a static report.

### PERMISSION-BASED ACCESS:

DivePort Administrators can set permission-based access to organizational data and provide users with tailored views of data using diveable dashboards or other metrics presented using an array of visualizations tools.

### FREEDOM TO EXPLORE DATA:

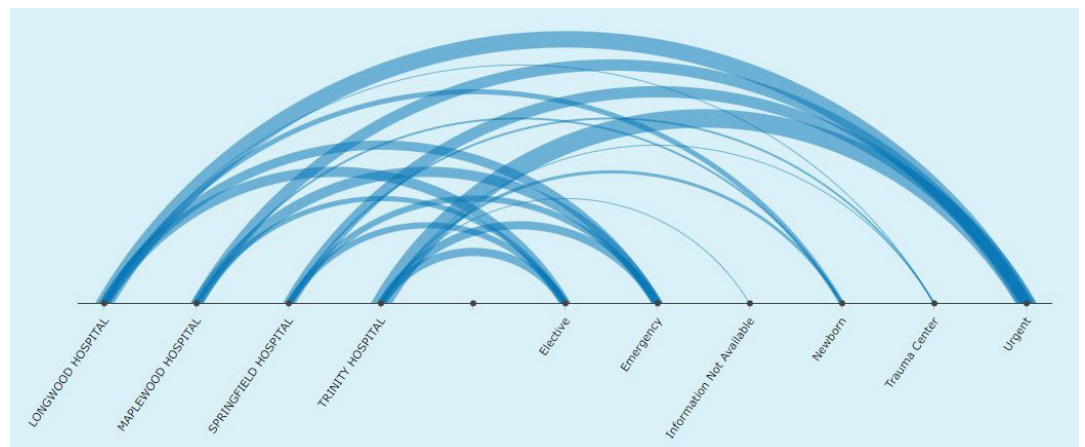
DivePort allows users to filter, sort, and Dive through the data in any manner they wish without having to understand complex scripting, formatting languages or report-writing techniques.

### KEY PRODUCT FEATURES:

- Highly configurable graphical and tabular data displays
- Customize content, layout and design by role, department, company and industry
- Mapping and location analysis capabilities
- Export to Excel®, PowerPoint® and PDF formats
- Integrate data and content from multiple sources
- Data capture and input capabilities for on-the-fly data correction, metrics management and dashboard annotation
- Supplement DivePort data with real time entry of data not found in enterprise databases or other source systems
- Implement data entry processes based on role-based and work flow-specific business needs
- Build custom dashboard applications to collect or correct data when and where it is needed
- Set goals, targets and threshold metrics for reports and dashboards

### DIVEPORT'S VISUALIZATION CAPABILITIES:

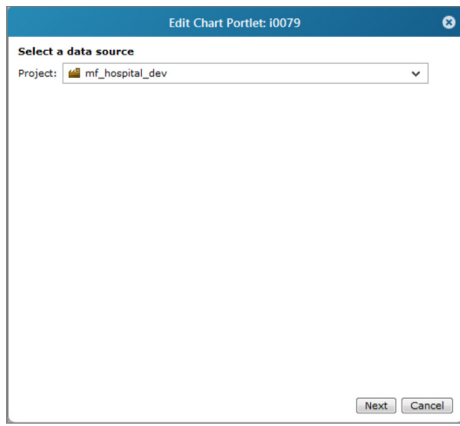
DivePort's visualization tools communicate information quickly and help viewers gain insight into patterns and trends that might not be easy to see when looking at tables of numbers.



### Arc Chart Example

**Patterns in Type of Admission by Hospital**—Emphasizes differences in the patterns for admission type between hospitals in a year or group of years. Click on either an arc or endpoint to better understand the patterns and relationships.

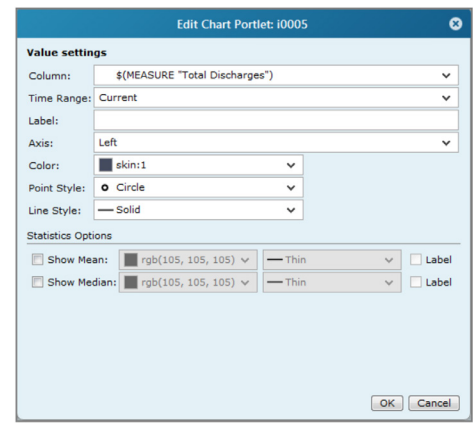
## PORTLET CREATION WIZARD STEPS



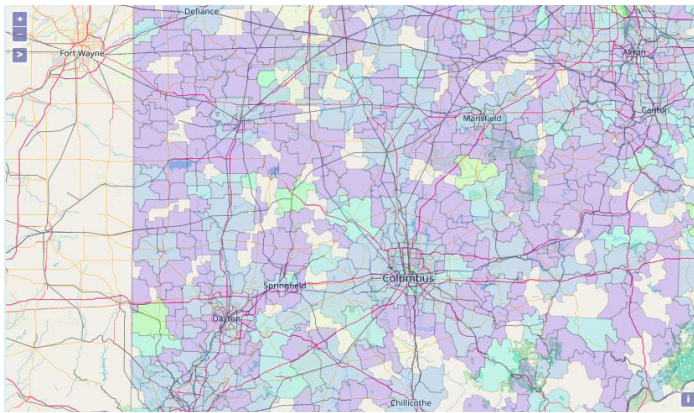
1. Select a data source



2. Select a chart type

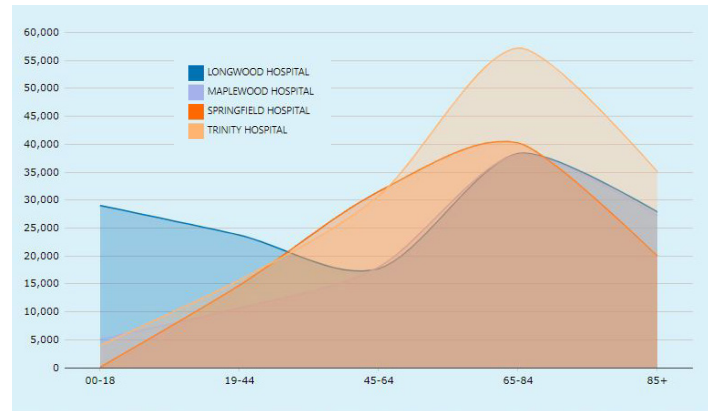


3. Value settings



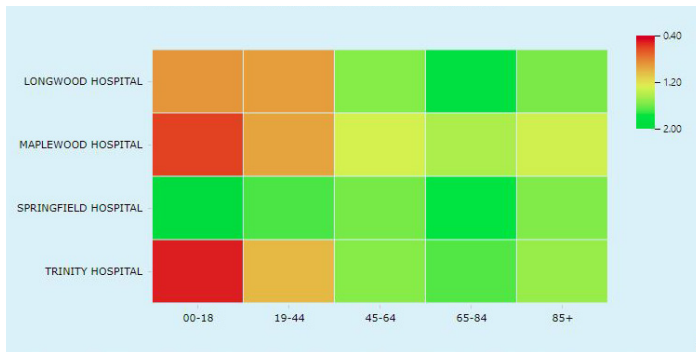
### Map Example

**All Payer Case Mix by Patient Zip Code**—Shows the location and volume of patient cases by zip code.



### MultiTab Spline Area Chart Example

**Distribution of Patient Census Days by Age Group & Hospital**—Shows the differences in the distribution of the overall patient census by age group of hospitals within a health system. Click on a segment to analyze the distribution.



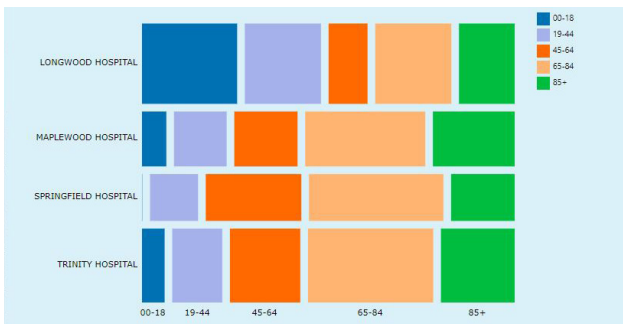
### Heat Matrix Chart Example

**Overall All Payer Case Mix by Hospital & Age Group**—Shows the differences in the case mix of the inpatient population by hospital and age group for the current year to date. Click on a cell in the chart to determine which factors are contributing to the differences.



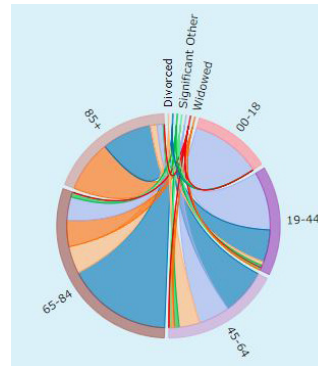
### Calendar Chart Example

**Emergency Department 72 Hour Returns by Day**—Highlights days when the number of return visits (within 48 hours) to the emergency department is unusually high, or low. Click on a specific day to investigate the possible reasons.



### Mosaic Chart Example

**Distribution of Inpatient Admissions by Age Group & Hospital**—Helps to visualize the distribution of hospital admissions across age groups by hospital for a particular year. Click on a cell to observe the reasons for the variations among hospitals.



### Chord Chart Example

**Marital Status by Age Group Across Hospitals**—Provides perspective on the marital status of patients by age group for the selected hospital (or hospitals) in a particular year. Click on either the outer ring, or a specific segment within the inner ring to investigate further.

## CONSULTING & CUSTOMER SUPPORT

Dimensional Insight’s professional services team offers an array of services that span the entire project lifecycle—from needs assessment to system maintenance. Our consultants employ best-in-class project delivery practices to design, implement, and customize your Dimensional Insight deployment. Our consultants draw on their extensive knowledge of healthcare to deliver optimal results, faster implementations, and cost savings for our clients. We partner with each of our customers to ensure rapid implementation of all BI project initiatives. Our #1 objective is to provide the expertise and process knowledge to maximize return-on-investment and minimize risk.

## TRAINING OPTIONS

Dimensional Insight training helps users, developers, and IS/IT staff fully understand and benefit from the power of Dimensional Insight. Courses are delivered onsite at customer organizations or online. Courses can be customized to meet specific needs and organizational challenges.

## SEE OUR CUSTOMER RATINGS IN ANALYST RESEARCH



© 2024 Dimensional Insight Inc. All Rights Reserved. Dimensional Insight and DivePort are either registered trademarks or trademarks of Dimensional Insight Inc. All other trademarks cited herein are the property of their respective owners.

60 Mall Road  
 Burlington, MA 01803  
 t: 781.229.9111  
 www.dimins.com